

# Northwestern Rural Electric Cooperative Association, Inc.

A Touchstone Energy® Cooperative 



One of 14 electric cooperatives  
serving Pennsylvania and New Jersey

## Northwestern REC

P.O. Box 207

22534 State Highway 86  
Cambridge Springs, PA 16403  
www.northwesternrec.com

## BOARD OF DIRECTORS

**Kathy Cooper-Winters, District 5**  
Chair

**Lisa Chausse, District 9**  
Vice Chair

**Michael Sample, District 3**  
Secretary

**Earl Koon, District 2**  
Treasurer

**Karl Ebert, District 1**

**Robert G. Agnew, District 4**

**Kim Docter, District 6**

**David "Earl" Snyder, District 7**

**Marian Davis, District 8**

**Lanny Rodgers, District 10**

## Staff

**Bill Buchanan, President & CEO**  
**Thomas Dimperio, VP –**  
**Information Technology**  
**Kathy Lane, VP & CFO**

**Linda King, VP – Communications &**  
**Energy Solutions**

**Connie Sovisky, VP – Member Services**  
**Kerri Fleet, HR Manager**

**Clarissa Schneider, Executive Secretary &**  
**HR Assistant**

## Main Access Number

1-800-352-0014

## Emergencies/Outages

1-800-352-0014

## FAX

814-398-8064

## Office Hours

Monday through Friday

7 a.m. - 3:30 p.m.

**Amy Wellington, Editor**

**Linda King, Managing Editor**

## From the President & CEO



## My Thanksgiving wish

By Bill Buchanan, *President & CEO*

I HAVE worked in the co-op world most of my adult life, first in the telephone industry and now in electric distribution. The cooperative way of business has always been appealing to me, though I will say, the telephone and electric industries vary tremendously. But co-ops are co-ops, meaning they are member-owned and community-driven organizations. My deeply embedded commitment to my family, my faith and my community mirrors many of the principles every cooperative follows.

I believe the more effort you put into something, the more you will get out of it. In a way, this resembles how co-op patronage credits work. Co-ops are nonprofits. Since co-ops are owned by members, any revenue left over at the end of each year is given back to the members as capital credits. The more a member uses a co-op's services in any given year, the higher the capital credits amount will be for that member.

In addition to Thanksgiving and Christmas, we are coming into capital credits season. We will be retiring capital credits in December for half of 2020, a quarter of 2002 and about 30% of 2013, as well as all generation and transmission credits for 2007. (Checks will be mailed the first week of January 2022.) This retirement method has been approved by your board of directors and is very common

among cooperatives.

It is my hope with this month's column to ask you to consider donating your upcoming capital credits allocation to the Member-to-Member (M2M) program. So many of our members already return their capital credits checks each year for the M2M program, which is very much appreciated. There is always a need for more, especially with the relentless pandemic.

We fondly refer to the M2M program as "a hand up, not a handout." It is a fund established by the members to help struggling members keep their lights on. Those who receive a M2M hardship grant also demonstrate a willingness to help themselves in the form of a copay.

On the next page is a form you can complete to donate your capital credits allocation directly to M2M before capital credits checks are printed. This saves a few cents on printing and postage expenses. You can also find this form on our website, NorthwesternREC.com.

Thank you for your time and consideration. Every donation to the Member-to-Member fund is tax-deductible. In the meantime, may the beauty and blessings of Thanksgiving bring warmth and peace to your home this season. 🌞

***Capital Credits Donation Authorization***

Please choose an option below, fill in the name on the account, print the form, sign and date.  
Return via the choices listed at the bottom of this form

**Donate All Future**

The undersigned does hereby authorize the assignment of future Capital Credits upon general retirement of said Capital Credits to Northwestern Rural Electric Co-operative Association, Inc. Provided, however, Capital Credits so assigned shall be utilized exclusively for charitable purposes as identified from time to time by the Board of Directors.

Further, the undersigned attests to be the rightful and responsible party to the Capital Credits accumulated in the name of \_\_\_\_\_. Further, that I execute this form voluntarily. I hereby indemnify and hold harmless said Cooperative from all claims, actions and suites by reason of any heirs or legatees.

**Donate This Year Only**

The undersigned does hereby authorize the donation of my 2021 Capital Credits upon general retirement of said Capital Credits to Northwestern Rural Electric Co-operative Association, Inc. Provided, however, Capital Credits are utilized exclusively for Member to Member, Inc.

Further, the undersigned attests to be the rightful and responsible party to the Capital Credits accumulated in the name of \_\_\_\_\_. Further, that I execute this form voluntarily. I hereby indemnify and hold harmless said Cooperative from all claims, actions and suites by reason of any heirs or legatees.

MEMBER SIGNATURE: \_\_\_\_\_ DATED: \_\_\_\_\_

PRINT NAME: \_\_\_\_\_

BILLING ADDRESS: \_\_\_\_\_

PHONE NBR: \_\_\_\_\_

**MAIL TO:**

Northwestern REC  
P.O. Box 207  
Cambridge Springs, PA 16403  
ATTN: Member Services Dept.

**FAX TO:**

Northwestern REC  
(814) 398-5378  
ATTN: Member Services Dept.

**EMAIL TO:**

info@northwesternrec.com  
ATTN: Member Services Dept.

**amazon smile**

**M2M**  
Member-to-Member, Inc.

**SUPPORT THE CO-OP'S  
MEMBER-TO-MEMBER FUND  
EVERY TIME YOU SHOP!**

Buy your gifts and everyday essentials at [smile.amazon.com](https://smile.amazon.com).  
Select Member-to-Member, Inc. as your charitable organization of choice and a small portion of each purchase will be donated to that fund.

*Member-to-Member, Inc. It's a hand up, not a hand out.*

# For the members of tomorrow

## Announcing the 2021 Clearly Brighter Teacher Grant recipients

AT NORTHWESTERN Rural Electric Cooperative (REC) we recognize that the children of today are the members of tomorrow. The Clearly Brighter Teacher Grant Program was designed to reach these kids by helping their teachers afford innovative and effective educational curriculum that is not



covered by traditional school financing. Between May and September, individual teachers can apply for grants up to \$250, while teams of teachers (two or more) can apply for grants up to \$500. Each year, Northwestern REC awards a total of \$4,000 through this program. Educators in public and private

schools, pre-K through 12th grade, as well as home-schooled organizations within Northwestern REC's service territory, are eligible to participate. It is not required for teachers or schools to receive electric service from Northwestern REC. Grants are awarded for projects in any discipline and are intended to help teachers bring special, hands-on projects to the classroom.

### 2021 Clearly Brighter Teacher Grant recipients

In honor of National Co-op Month last month, the following local educators were chosen as recipients of the 2021 Clearly Brighter Teacher Grants. Totaling \$3,850, the 2021 awards were presented to:

1. **Scott Hutchinson**, grades 5 through 8 at James W. Parker Middle School in Edinboro, awarded \$250 for “Positively impacting the world by coding drones.”
2. **Cheryl Collins**, grades K-3 at Neason Hill Elementary School in Meadville, awarded \$500 for “Project: Close that reading gap!”
3. **Casey Lynn Costello**, grade 10 in PA Cyber School, awarded \$250 for “Comparing and contrasting the hatching habits and success rates of two breeds of chickens.”
4. **Michelle Dutko**, grade 1 – homeschool, awarded \$200 for “Barnyard birdhouse and feeder construction.”
5. **Jodie Deane**, grade 5 at Cambridge Springs Elementary School, awarded \$500 for “Headphones and fact fluency.”
6. **Jason Turner**, grade 4 in Penncrest School District, awarded \$380 for “Virtual learning components.”
7. **Kristin Wallace**, grade 6 at Cambridge Springs Elementary School, awarded \$90 for “XtraMath, math fact fluency.”
8. **Mollie Mumau**, high school grades at General McLane School District in Edinboro, awarded \$150 for “Ambient lighting.”
9. **Bradley Dutchcot**, grades K–6 at Cambridge Springs Elementary School, awarded \$250 for “Robotics for all.”
10. **Nicole DeFrances**, grades 1–6 at Cambridge Springs Elementary School, awarded \$280 for “Book fair.”
11. **Heidi Greer**, grades K–12 at Rometown Academy in Spartansburg, awarded \$500 for “Computer lab.”
12. **Sharon Reagle**, middle school grades at Union City Middle School, awarded \$250 for “Understanding germs and spreading diseases.”
13. **Sarah Webb**, high school grades at General McLane School District in Edinboro, awarded \$250 for “General McLane Café/Reverse Inclusion Program.”

Northwestern REC received 26 Clearly Brighter Teacher Grant applications for the 2021-2022 school year. Although we wish we could accommodate all of the requests, we are limited to the schools within our service territory, and several applications were missing specific budget details.

Congratulations to all the grant recipients and best wishes in their endeavors. 🌞

## The rest of our story

By Amy Wellington, *Director of Communications*

THIS IS a time of year for reflection, and topping my list of things I'm grateful for is our wonderful community. I know I speak for all Northwestern REC employees when I say that we are thankful to be in such an incredible place. We are fortunate to live in the same place where we work, which makes our ties to this community that much stronger.

You may recall that last month we touched on the first three cooperative principles. So, this month, I'd like to tell you about the remaining four principles. The cooperative principles are essential to the co-op business model and benefit all members of the co-op.

### Autonomy and independence

The fourth principle, autonomy and independence, means that the co-op operates in an autonomous way that is solely directed and guided by its members, reflecting the values and needs of our community. This means the co-op is not being influenced by leaders or shareholders several states away. Instead, the co-op is led by the local members it serves.

### Education and training

The fifth principle, education and training, focuses on enhancing the knowledge of co-op employees and board members, which enables them to contribute to the development of the co-op.

By investing in continuous learning for our employees and board members, our co-op is not only making a commitment to their individual professional and personal growth, but also to the future of the co-op and the high quality of service our members expect and deserve. It's a win-win situation.

We also strive to inform you, our members, and the public about the mission and operations of the co-op. In fact, that's why you receive *Penn Lines* every month; so we can share the latest co-op news and updates, as well as energy efficiency and safety tips.

### Cooperation among cooperatives

Cooperation among cooperatives is the sixth principle and fosters the way that co-ops work together to address bigger challenges. While this principle applies to all types of cooperatives, it is especially relevant in the energy industry. In our case, we put this principle in action after major storms and disasters that cause widespread power outages. When this happens, we call on nearby co-ops to come to our aid and assist with restoration efforts, and we, of course, extend the same help to them when they need us. I can't think of a better example of cooperation among cooperatives.

In addition, because we are part of

the national electric co-op network, we can connect and collaborate with other electric co-ops outside of Pennsylvania to tackle industry-related challenges, like cybersecurity and an ever-changing energy landscape.

### Concern for community

The seventh principle, concern for community, is essential to who we are as cooperatives. We serve our community not only by being an essential service, but also by helping to power our local economy. Whether through economic development, volunteerism or donations to local causes, we invest in this community because it's our home, too.

I think you'll find that most cooperatives bring good people together to make good things happen in the community. We hope you feel that way about us, your local electric co-op.

On behalf of everyone at Northwestern REC, we're thankful for your membership, and we hope you have a wonderful Thanksgiving. 🍂

**Community born.  
Community led.  
Focused on YOU.**



# WHAT IS RENEWABLE ENERGY?

The Answer is Blowing in the Wind

We hear a lot about renewable energy, but what is it, exactly?

It is an energy source that is perpetual ... inexhaustible... "to infinity and beyond!" Renewable energy has storage limitations, however, and some types are not available 24/7.

## A FEW FACTS

- According to the University of Michigan (U-M) Center for Sustainable Systems, about 80% of the nation's energy comes from fossil fuels, 8.4% from nuclear and 11.4% from renewable sources.
- In 2019, renewable energy sources accounted for about 17% of energy generation, according to the U.S. Energy Information Administration (EIA).
- The EIA projects that the share of renewables used for U.S. electricity generation will increase from 21% in 2020 to 42% in 2050.
- Wind and solar are the fastest-growing renewable sources, but they provide just 3.8% of total energy used in the U.S., according to the U-M center.

Safe  
Electricity.org®

## THE MAJOR TYPES OF RENEWABLE ENERGY SOURCES ARE:



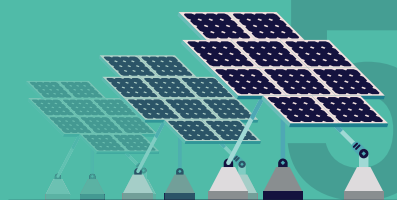
**BIOMASS,  
INCLUDING  
BIOFUELS**  
(comes from plants  
and animals)

## WATER OR HYDROPOWER



**GEOHERMAL**  
(comes from the heat  
of the earth)

## WIND



**SOLAR**